

a Beary good CANDY BOX CARD

BY ALMA DE LA ROSA

To Create Card Front:

- 1 Stamp the sentiment across the bottom of one piece of white card stock with Olympia Green. Trim the sentiment into a strip and notch the ends. Sponge edges with Spanish Moss ink.
- 2 Stamp the bear in the same ink on remaining section and color. Cut around closely and set aside.
- 3 Use the pink marker to color a 5" x 5" section of the telephone book page. Punch 6 hearts from the colored page. Stack them together and use the hole punch to cut hole in the center. Run the brad through the hole to hold together.
- 4 Thread the button with twine and attach to the top of the brad. Scrunch each layer around the button, leaving the last layer flat.
- 5 Use Nestabilities Labels 8 to create die cut from 5.25" x 4" patterned paper. Sponge edges with Spanish Moss ink.
- 6 Use Sizzix die to cut the "outlined" heart from the remaining piece of white cardstock. Cover with adhesive. Place behind the patterned die cut as shown in picture. *TIP: If you do not have an heart with an open center, use a solid heart and cut the center out with scissors or a craft knife.*
- 7 With the adhesive facing forward. Glitter the exposed section of heart.
- 8 Score the Pink cardstock at 3" along the short side. Turn over and score again at 3". Round the corner with the punch and sponge edges with ink. Assemble front of card as shown, running the ribbon from front to back leaving tails long enough to time into a bow, on top of doily.

To Create Box:

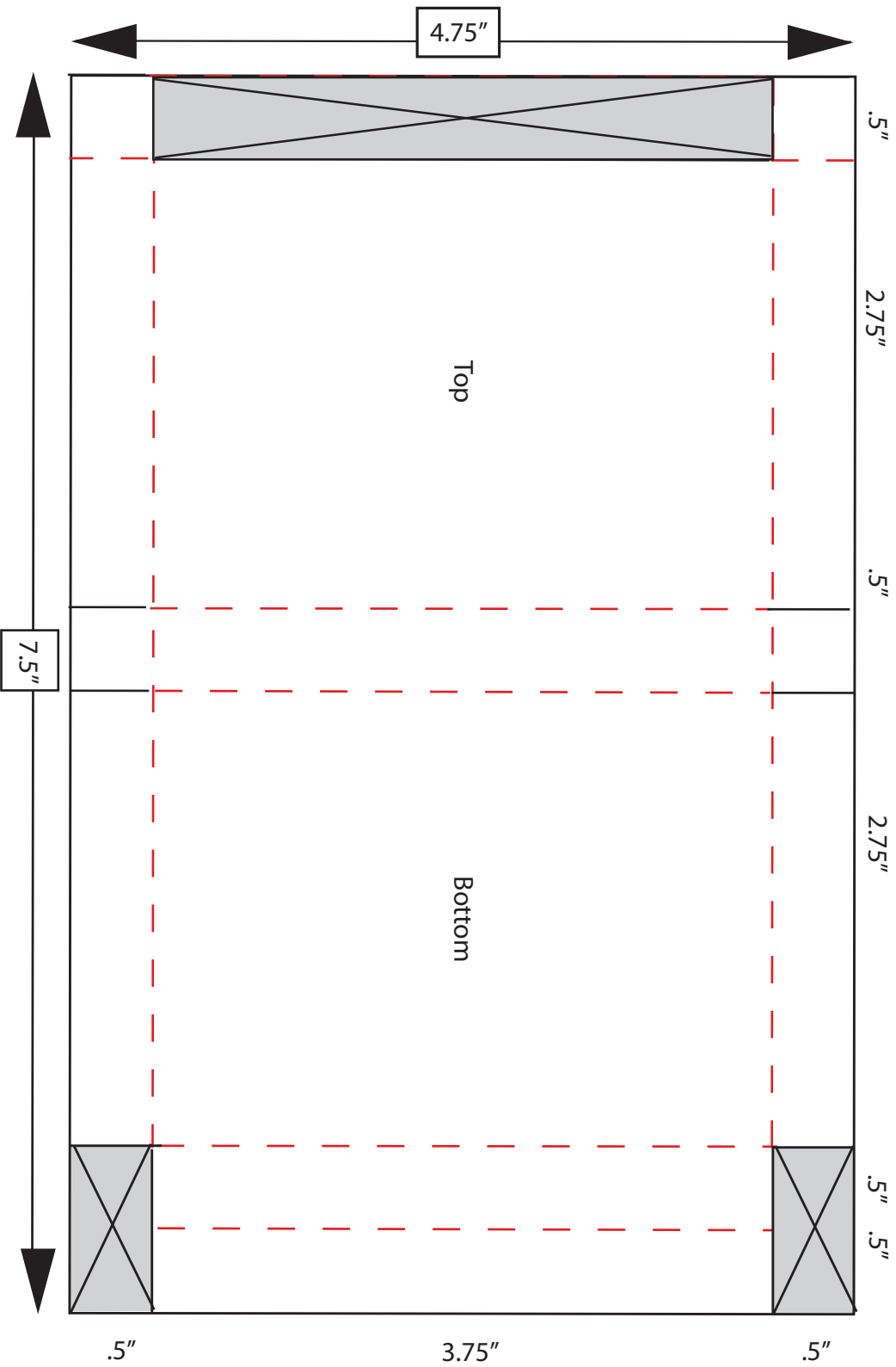
- 1 Download the template for the box and use the measurements to form the box.
- 2 Before you assemble the box, use the Nestabilities Labels 4 to cut a hole in the center of the front. Use the corner punch to round the corner of the top flap on the bottom of the box. Sponge edges with ink.
- 3 Adhere the acetate to the inside front and assemble the box. The front panels attach over the bottom panels.
- 4 Line up the left side of the box to the right crease on the inside of the card and adhere to card. Fill with candy. Tie ribbon into bow.



You'll need:

- A Beary Good Year Clearly Swanky Set (W-9679 CL)
- Versafine Olympia Green & Spanish Moss
- 4.25" round doily
- Patterned paper
1 @ 5.25" x 4"
1 @ 7.5" x 4.75"
- Pink Cardstock 4.25" x 6.5"
- White Cardstock 2 @ 3.5" x 3.5"
- Acetate 2.75" x 3.5"
- Pink Marker
- 1 small brad
- Hole punch
- Telephone book page
- Sizzix heart die or equivalent
- Silver Glitzy
- Ribbon
- Double-sided adhesive
- Dimensional glue dots
- Button
- Twine
- 1" Heart Punch
- Coloring Materials
- Nestabilities Labels 4 & 8
- Glue & foam tape

February
**PROJECT
OF THE
MONTH**



**A BEARY GOOD
CANDY BOX CARD**
BY ALMA DE LA ROSA

Project
February
**OF THE
MONTH**